

OVERVIEW OF SUPPORTING INDIVIDUAL SUCCESS INITIATIVE SEPTEMBER 2013



Paul R. LePage, Governor

Mary C. Mayhew, Commissioner

Background

Background

- In 2008 the Department formed a group to choose an assessment tool for people with intellectual disabilities and autism. The goal was to create “fairness and equity of resource distribution across a system based on a standardized assessment of individual needs.”
- The Department researched 12 assessment instruments.
- The team chose the SIS (Supports Intensity Scale) as the tool which best met the goals of Maine’s initiative.

The Supports Intensity Scale (SIS)

- The SIS is a standardized assessment tool developed by the American Association on Intellectual and Developmental Disabilities which is *designed to measure the pattern and intensity of support that an individual with intellectual and developmental disabilities needs to be successful in the community.*



The Supports Intensity Scale (SIS)

- ✓ is a supports-based tool
- ✓ was normed with over 1,300 culturally diverse people with intellectual and developmental disabilities
- ✓ is reliable and valid demonstrated by research that is published in peer-reviewed journals
- ✓ can be used for system planning and resource allocation
- ✓ widely used; 22 states and 14 languages

Maine's Supporting Individual Success Initiative

Supports Intensity Scale (SIS)

+

Resource Allocation = Supporting Individual
Success

GOALS OF THE INITIATIVE:

- Create fairness and equity by aligning assessed support needs with funding amounts.
- Support 18-20 year olds by using the SIS to inform transition planning and to estimate future costs
- Use some portion of savings to move people on the waiting lists into services
- Encourage independence by supporting peoples' goals to live a full life in their community

GOALS OF THE INITIATIVE

(cont.)

- Develop self-directed service options to encourage maximum flexibility within the individual budget model
- Use the SIS interview and results to inform Person-Centered Planning
- Improve quality by creating a system that is individualized and sustainable

RESOURCE ALLOCATION: THE BIG PICTURE

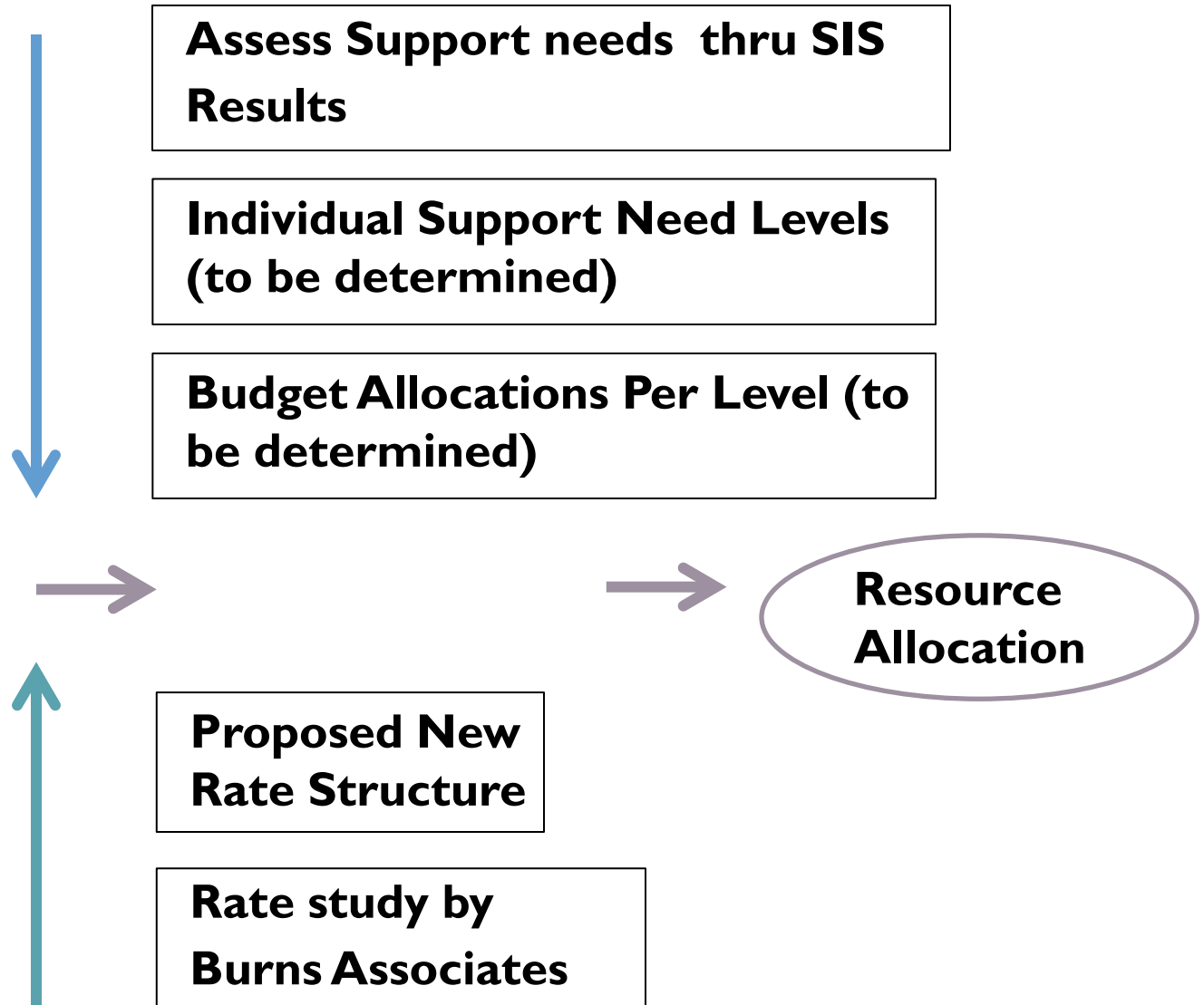
- Individual support needs as measured by the SIS are matched with individual budgets.

MAINE'S RESOURCE ALLOCATION MODEL

- Individuals will be assigned to a “Level Budget Allocation” based on an analysis of their support needs as determined by the Supports Intensity Scale.
- Budgets will be prospective rather than retrospective, based on current support needs.
- Budget allocations will be assigned to each level of need based on a reconciliation of budgets and rates as seen in the following diagram.

Source: HSRI

Developing the Resource Allocation Model



A solid blue vertical bar is positioned on the left side of the slide, extending from the top to the bottom.

WHAT'S BEEN ACCOMPLISHED TO DATE

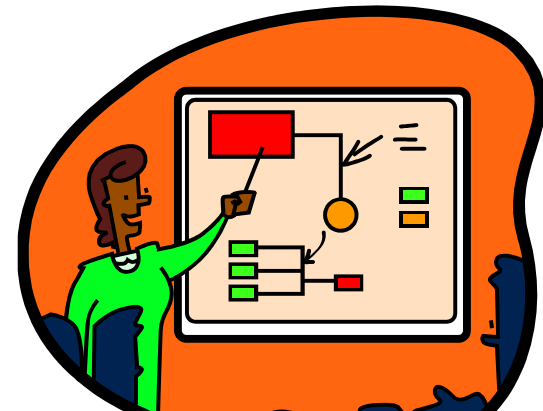
WHAT'S BEEN ACCOMPLISHED

- SIS Interviewers trained by AAIDD completed about 2,400 interviews as of August 31, 2013, of individuals on Section 21 of the HCB Waiver.
- HSRI trained Office of Aging and Disability Services (OADS) staff for Verification Team. They review case records for those who may have exceptionally high medical or behavioral needs.



WHAT'S BEEN ACCOMPLISHED (continued)

- Human Services Research Institute (HSRI) analyzed data from completed SIS interviews.
- Findings were presented at SIS Stakeholder meetings in January 2013 and June 2013. Stakeholders included consumers, advocates, providers, parents and Department staff.



WHAT'S BEEN ACCOMPLISHED

- Burns Associates engaged in conducting a rate study that is expected to be completed by October 2014.
- Verification Team has reviewed more than 200 cases

Basic Findings from HSRI's Analysis of Data from 1,233 SIS Interviews:

- From the data provided to date HSRI was able to develop a 5-level system that groups people with similar support needs.
- **Average** expenditures of those receiving Section 21 HCB Waiver services range from a low of \$67,556. to a high of \$136,710.
- Average expenditures vary by types of services received.

A solid blue vertical bar is positioned on the left side of the slide, extending from the top to the bottom.

WHAT'S HAPPENING NOW

SIS Interviews

- **SIS Interviewers** are continuing to interview individuals on Section 21 of the HCB waiver.
- **Verification Team** continues to review individual case records for those who have high medical or behavioral needs.



REVIEW OF SERVICE ARRAY

- Examining paid services and supports to ensure that individual needs are met.
- Gathering input from internal and external stakeholders.



NEXT STEPS



- Complete rate study and publish new rates.
- Examine current service array and service definitions with an eye toward redesign.
- Develop resource allocation model.
- Assign individuals to levels within the resource model.

SIS COMMUNICATION PLAN

OADS has developed a communication plan to ensure that all stakeholders are informed about the SIS initiative on an ongoing basis.

The SIS website located on the DHHS OADS website can be found at

<http://www.maine.gov/dhhs/oads/disability/ds/sis/index.shtml> This includes:

- ✓ **HSRI's latest report & presentation**
- ✓ **SIS FAQs**

QUESTIONS???

