

Disabilities: A New Perspective

What does our community need?
What does our community at large need?



Linda Lee RN, BSN

JONNO'S
PLACE











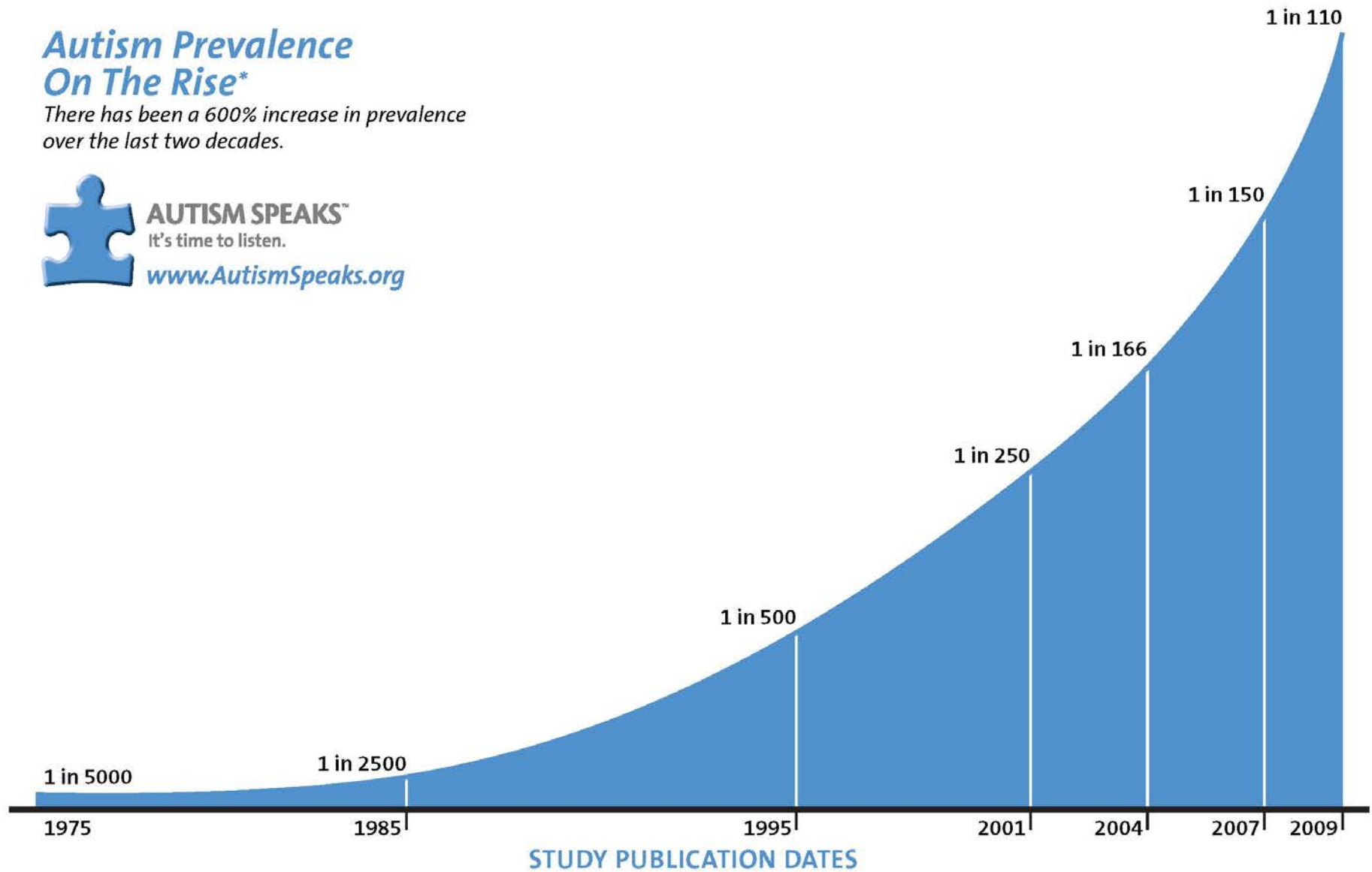
Autism Prevalence On The Rise*

There has been a 600% increase in prevalence over the last two decades.



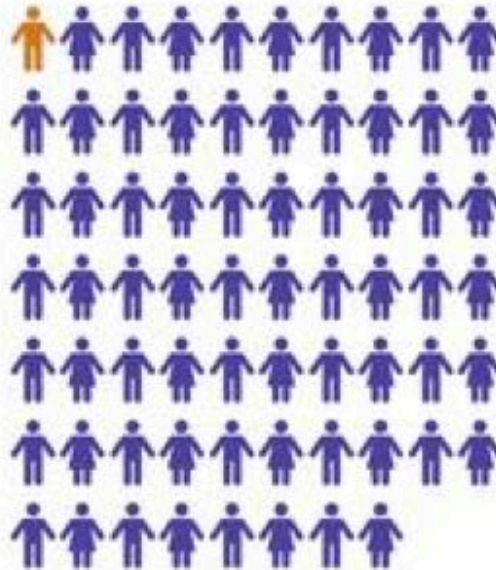
AUTISM SPEAKS™
It's time to listen.

www.AutismSpeaks.org



*Recent research has indicated that changes in diagnostic practices may account for at least 25% of the increase in prevalence over time, however much of the increase is still unaccounted for and may be influenced by environmental factors.

NUMBER OF CHILDREN IDENTIFIED WITH ASD



1 in 68



U.S. Department of
Health and Human Services
Centers for Disease
Control and Prevention

Autism Spectrum Disorders Report

In response to legislative directive:
The Autism Act of 1984, 34-B M.R.S.A. §6001

Prepared by:
The Maine Department of Health and Human Services
And
The Maine Department of Education

With input from:
Persons with Autism Spectrum Disorders,
Parents, Advocates and Other Governmental Agencies

April 2015

Coordinated by the Maine Developmental Disabilities Council

The number of
individuals with ASD
has increased
over 848%
since the year 2000

**“The crest of the epidemic
of individuals with ASD is
now reaching adulthood,
implying the need for
significant changes in our
adult services system”**



Maine Developmental
Disabilities Council

Annual Report

Submitted to the 127th Legislature
State of Maine, 2nd session

Pursuant to 34B: 17001; January 1-December 31, 2015

January 25, 2016

“Community inclusion and self-determination are based on the assumption that the person is a part of and connected **within** the community. It means the person is engaged socially, recreationally, culturally, and spiritually. The **person is a productive and valued community member**. The person individuates from parents and caregivers, makes informed choices, and is respected through typical interactions with others as part of a community. **THE PERSON BELONGS.**”



**CAMP HILL
ASSOCIATION
OF NORTH AMERICA**





spindleworks

DREAMS & INSPIRATIONS

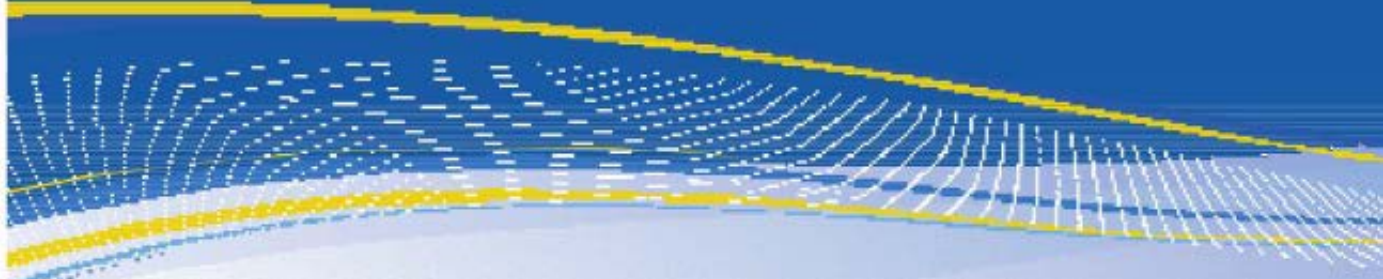




Final Rule Medicaid HCBS



Disabled and Elderly Health Programs Group
Center for Medicaid and CHIP Services



What does our community at large need?

THE REPUBLICAN JOURNAL

Local businesses struggle to find workers

Teen employment continues to decline; Employer: "They want more "me" time"

By Jordan Bailey | Aug 10, 2017



Photo by: Jordan Bailey

Isabella Porter, right, a Belfast High School student, works full-time as a waitress at Lobster Pound in Lincolnville. At left is Theresa Masticolo of Camden. Because of short staff in the kitchen this year, the restaurant does not seat more customers than it can comfortably serve, even if there are tables available.



ERIN HERBIG: State Representative Waldo County & Maine House Majority Leader

"I have visited over 50 employers in Waldo County over the last month and a half, and virtually every single one said 'My No 1 priority is I am having trouble hiring people.'" (Dec 2017)

<https://waldo.villagesoup.com/p/what-the-waldo-county-works-business-tour-taught-me/1707779>



Letter regarding collaboration between Fireside Inn & Suites and Jonno's Place

My name is Barry Asalone and I have been the General Manager of Fireside Inn & Suites, formerly Comfort Inn, in Belfast and Waterville for the past ten years. We look forward to having Jonno's Place as our neighbor. I see potential for a symbiotic relationship where the Fireside Inn & Suites can provide job training and career opportunities in exchange for dedicated and reliable associates. I also envision that since Jonno's Place is planning to have an event barn on the adjoining lot, we may be able to rent meeting space from Jonno's Place when we have need for additional space, for conferences or weddings. Currently we only have meeting space to accommodate 40 people although our sleeping rooms can accommodate 164 people; the proposed barn at Jonno's Place will be able to accommodate 100 people for weddings and 150 people for conferences, the attendees would then stay at the Fireside Inn & Suites, less than 100 feet away on the same side of the road. We may also be able to provide extra parking for Jonno's Place when they are having larger events and there may be opportunities for cross marketing as well.

Regarding the potential of hiring residents with special needs, I have been in the hotel business for nearly 30 years; during that time I have had the opportunity to work with people who are differently abled. In Waterbury, Connecticut we worked with Waterbury ARC, who almost completely staffed our laundry. Training times were long, but after training, you could not ask for a more reliable and motivated group of associates. In Bangor, Maine at the Marriott, I had a developmentally delayed dishwasher who was so dedicated to her job that, when the bus service shut down because of blowing snow, she walked three miles in the snow from her apartment downtown. She arrived one hour before her shift. Needless to say, we encouraged her to call someone on days like that. Since Jonno's Place will be located right next door to us, the residents will be able to walk across the lawn to work and back home again, without having to cross a road. We plan to construct a little wooden bridge so residents can cross the stream between our properties safely. Being able to walk to work eliminates the need for public transportation and this affects job attendance positively.

I am excited about the many possible mutually beneficial opportunities which can arise as Fireside Inn & Suites and Jonno's Place collaborate, not only for our mutual benefit, but also for the benefit of our community as a whole.

Barry Asalone

General Manager
Fireside Inn & Suites, Ocean's Edge
159 Scarsport Ave.
Belfast, Maine 04915
207-338-2090
www.belfastmainehotel.com



**Skilled Workers
integrated into the local
community at large**

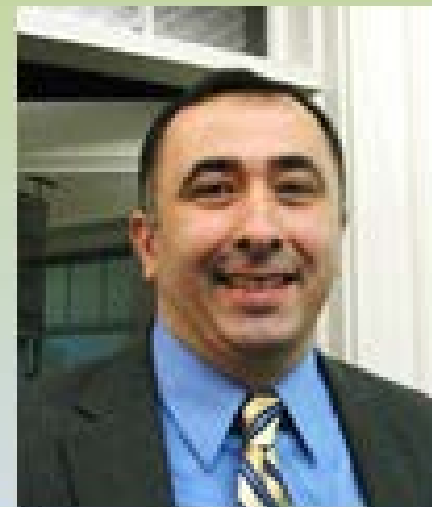
**Work Training/
Apprenticeships**



**Hope Barn Deconstruction;
to be reconstructed as Jonno's Place
Community Center in Belfast, ME.**



Collaboration with Belfast City Officials



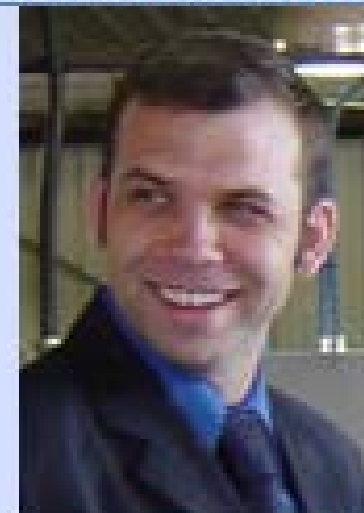
Michael McFadden
Police Chief Belfast



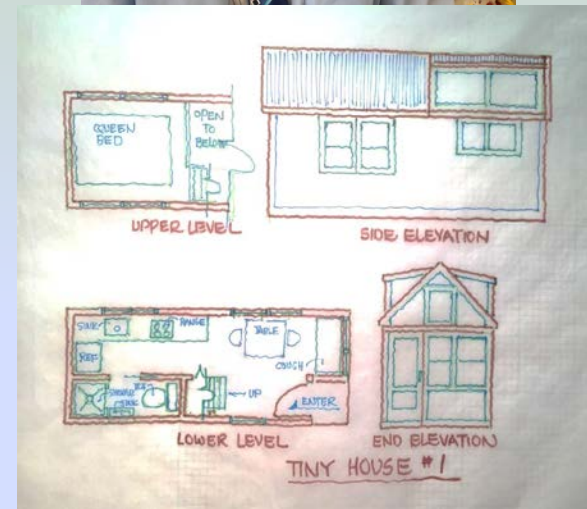
Wayne Marshall, MA
City Planner, Belfast



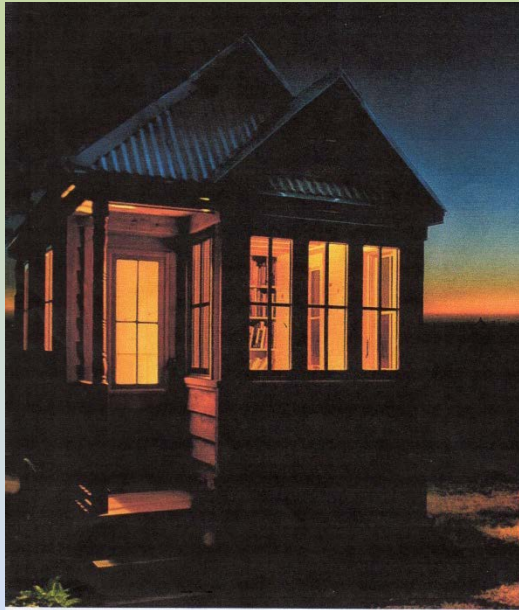
Brent Martin, CMA
City Assessor, Belfast



Thomas Kittredge, MA
Economic Development
Director, Belfast



**Collaborative Tiny House Build
Project
Enhances Skill of Trade's Students
at WCTC
Better Prepared for Workforce**



Belfast Area High School

Approved Classroom Cleaning Products



Glance/ Look

Can be used for: General Cleaning,
Dry-Erasable Boards, Desk/ Table Tops,
Door-knobs, Mirrors, Glass, etc.

&



Tiger-Wipes

NO LONGER Approved Products



NO Dry-Erasable
Markers except
Non-Toxic



UNIQUE CHALLENGES

SMELLS

SOUNDS

SIGHTS

Division of Lifelong Learning
Hutchinson Center



80 Belmont Avenue
Belfast, Maine 04915
Tel: 207.338.8000
Fax: 207.338.8013
800.753.9044
hutchinsoncenter.umaine.edu

March 30, 2016

RE: Jonno's Place
Belfast, Maine
David Grinstein dgrinstein@gmail.com
Linda Lee lindalee012@gmail.com

Greetings,

It is with excitement and commitment that I write this letter of support regarding Jonno's Place, a Camphill-inspired, shared-living ecovillage project in Belfast, Maine, for those with and without disabilities.

Over the course of several meetings with Linda Lee and Dr. Emily Markides, I have agreed on behalf of the University of Maine Hutchinson Center, to collaborate and support this inspiring and impactful community project.

The Hutchinson Center has agreed to offer support in the following ways:

1. Provide academic advising and college planning services to the volunteer workers at Jonno's Place.
2. Offer need-based scholarships for University of Maine undergraduate and graduate courses to volunteer workers, dependent on available funds.
3. Host a fundraising event at the Hutchinson Center to support this project.
4. Provide access to the Center's computer labs and Wi-Fi to all Jonno's place volunteer workers.
5. Explore opportunities for Capstone projects and field work for University of Maine students.

I look forward to continued involvement and collaboration with this initiative.

Sincerely,

Patricia Libby, LMSW
Interim Director, University of Maine Hutchinson Center

cc: Monique LaRocque,
Associate Provost of Division of Lifelong Learning
University of Maine

Dr. Emily Markides, University of Maine
David Grinstein
Linda Lee

MAINE'S LAND GRANT AND SEA GRANT UNIVERSITY



UMaine Students: PAX 380/598 Ecovillages. Dr. Emily Markides, Spring 2016



Art Circle

JONNO'S
PLACE



How can WE all work together to make this happen?







**Please join us as together we
create this dream**

Linda Lee 207-505-0307

lindalee012@gmail.com

JonnosPlace.org

Facebook: Jonnos Place

